



OpenERP Virtual Machine Installation Instructions – v7.0

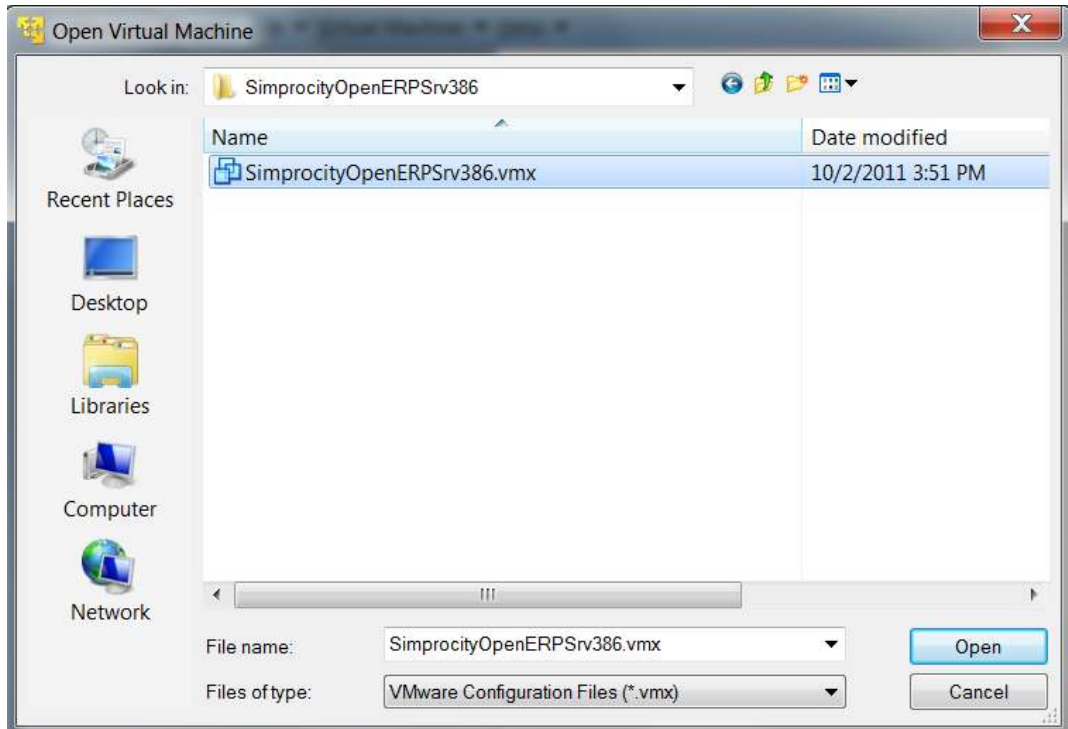
Author: Daniel J. Portenlanger

Date: March 17, 2013

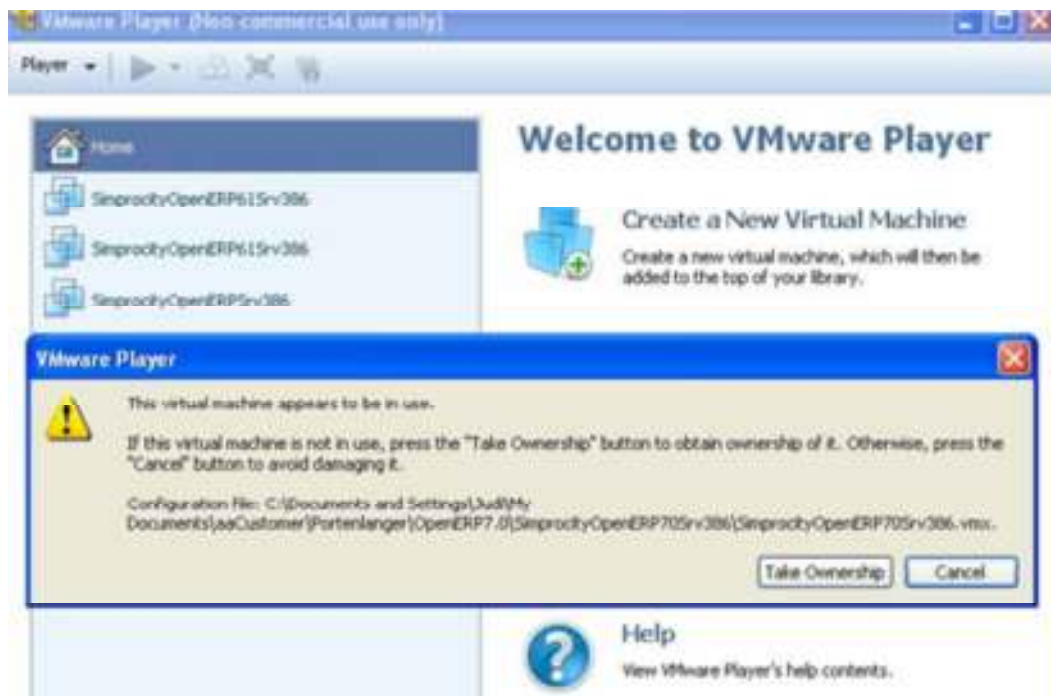
1. Verify that your PC has 3GB of RAM.
2. If your PC does not have Virtual Machine software installed, download and install VMware Player at:
https://my.vmware.com/web/vmware/free#desktop_end_user_computing/vmware_player/5_0
3. Download and extract SimprocityOpenERP70Srv386.zip
(<http://www.simprocityinc.com/openerp7.0/SimprocityOpenERP70Srv386.zip>) to a location of your choice.
4. Open VMware player and “Open a Virtual Machine.”



5. Open the following Virtual Machine. **Version 7.0** is *SimprocityOpenERP70Srv386.vmx*



6. Play the virtual machine. The Linux Server will start. (Note: Make sure that the host PC is connected to your LAN before starting the VM. It may be necessary to edit the Virtual Machine network settings from NAT to Bridged if you wish to use an IP address on your existing LAN.)
7. If you receive the error message below, click on "Take Ownership."



8. If you receive the question “Did you copy or move the VM?” select **MOVED**.
9. Click into the VM and enter the user id password to sign on. (Sometimes it only asks for password.) **The user id is *server* and the password is *server***
10. Note the IP address of the VM. Run a terminal session and execute the command *ifconfig eth0* <Enter>. If there is no eth0 then complete the following:
 - a. `sudo rm /etc/udev/rules.d/70-persistent-net.rules`
 - b. `sudo shutdown -r now`
 - c. Repeat the *ifconfig eth0* command. Note that you can edit */etc/network/interfaces* to make the VM have a static IP address.
11. If you are testing version 6.1-1 or 7.0, **PROCEED TO STEP 18 UPON COMPLETING THIS STEP!!!!**
Simply run the OpenERP desktop shortcuts. **The url for the 6.01-1 and 7.0 web client is <http://vma.ipa.ddr.ess:8069>** (the ip address of the virtual machine port 8069. If you are testing 6.03, continue on to step 12.

*****CONTINUE ON TO STEP 12 ONLY IF YOU ARE EVALUATING VERSION 6.03, OTHERWISE PROCEED WITH STEP 18*******

12. Type *opener-server* <Enter> to start the database server service.

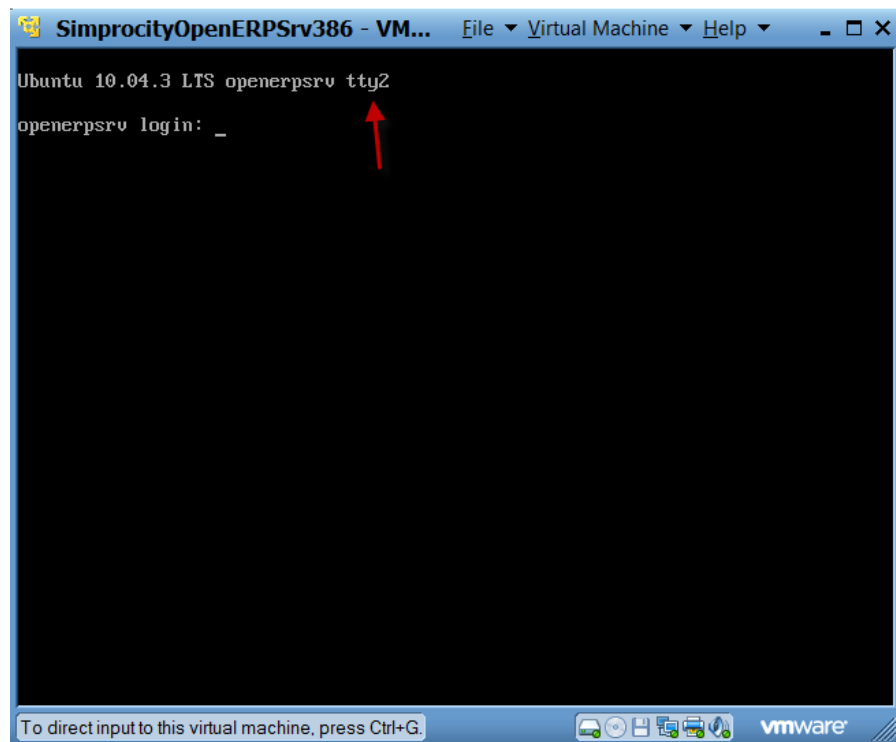
```

eth0      Link encap:Ethernet  HWaddr 00:0c:29:77:90:23
          inet addr:192.168.56.131  Bcast:192.168.56.255  Mask:255.255.255.0
          inet6 addr: fe80::20c:29ff:fe77:9023/64  Scope:Link
          UP BROADCAST RUNNING MULTICAST  MTU:1500  Metric:1
          RX packets:18  errors:0  dropped:0  overruns:0  frame:0
          TX packets:19  errors:0  dropped:0  overruns:0  carrier:0
          collisions:0  txqueuelen:1000
          RX bytes:2070 (2.0 KB)  TX bytes:2010 (2.0 KB)
          Interrupt:19  Base address:0x2024

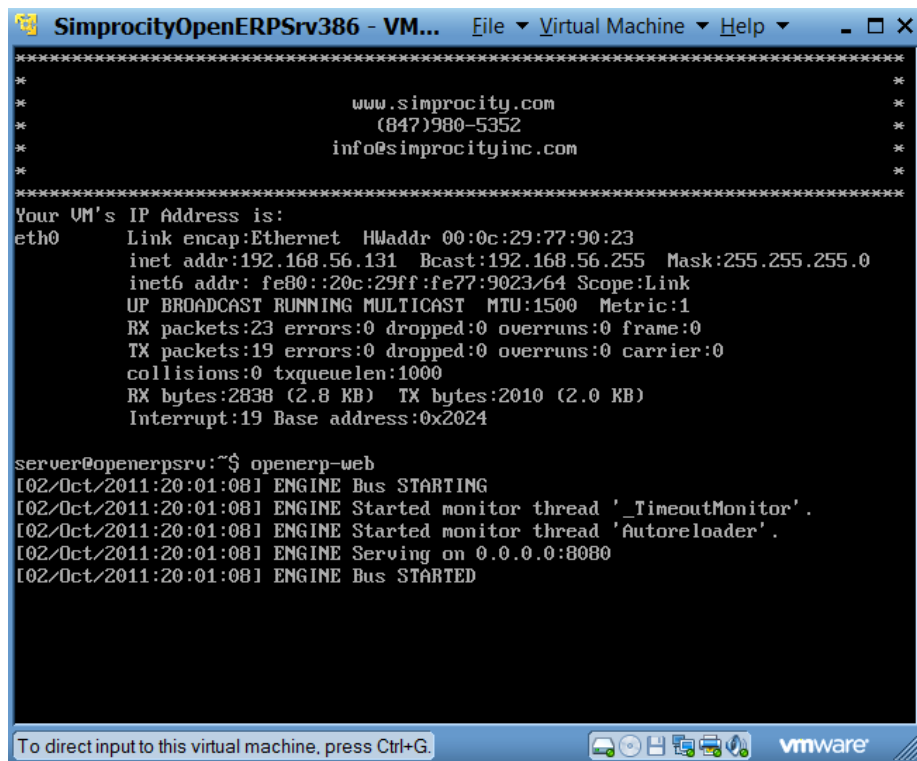
server@openerpsrv:~$ openerp-server
[2011-10-02 19:56:42,530][?] INFO:server:OpenERP version - 6.0.3
[2011-10-02 19:56:42,533][?] INFO:server:addons_path - /usr/local/lib/python2.6/
dist-packages/openerp-server/addons
[2011-10-02 19:56:42,537][?] INFO:server:database hostname - localhost
[2011-10-02 19:56:42,540][?] INFO:server:database port - 5432
[2011-10-02 19:56:42,542][?] INFO:server:database user - server
[2011-10-02 19:56:42,545][?] INFO:server:initialising distributed objects servic
es
[2011-10-02 19:56:43,234][?] INFO:web-services:starting HTTP service at 0.0.0.0
port 8069
[2011-10-02 19:56:43,238][?] INFO:web-services:starting HTTPS service at 0.0.0.0
port 8071
[2011-10-02 19:56:43,347][?] INFO:web-services:Registered XML-RPC over HTTP
[2011-10-02 19:56:43,408][?] INFO:web-services:starting NET-RPC service at 0.0.0
.0 port 8070
[2011-10-02 19:56:43,526][?] INFO:server:Starting 3 services
[2011-10-02 19:56:43,586][?] INFO:server:OpenERP server is running, waiting for
connections...

```

13. Hold down Alt and press F2 (Alt-F2) to open another session. This session will be used to start the web service for the OpenERP Web Client.

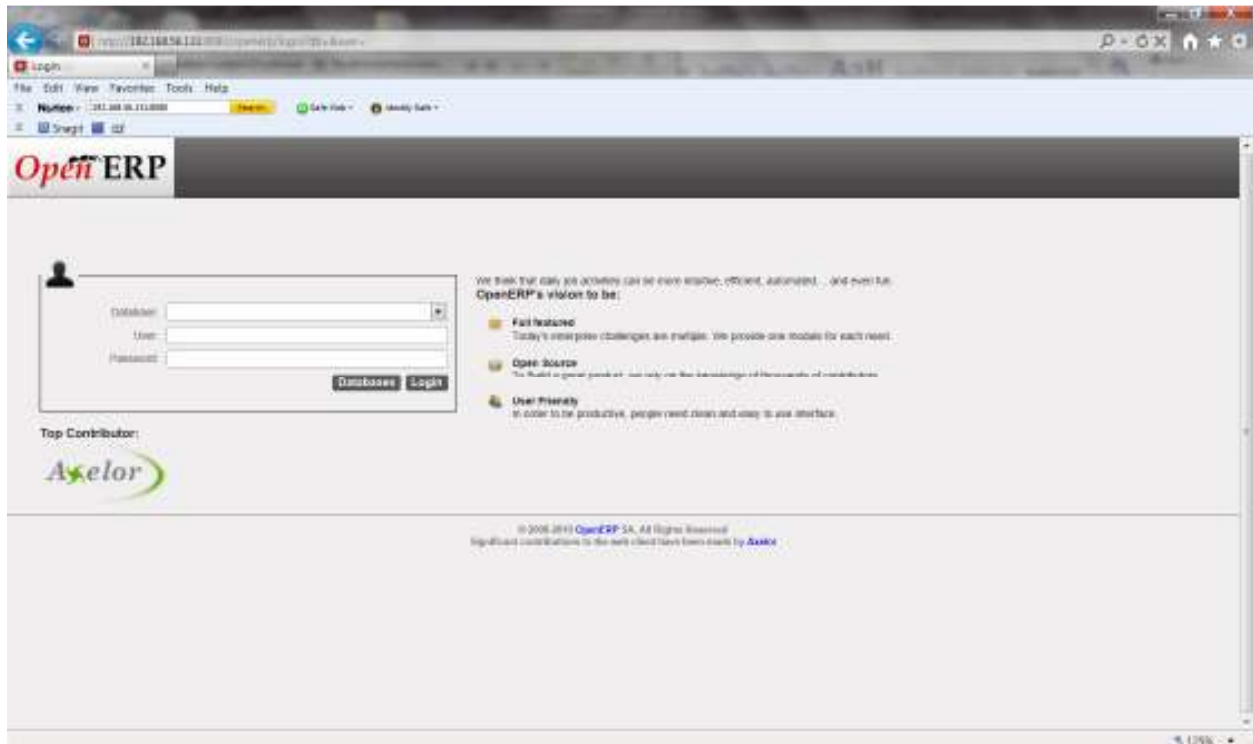


14. Login again with the server/server credentials
15. Type openerp-web and press <Enter> to start the web service.



16. Start your web browser. Note that OpenERP works with all browsers but works best with Firefox.
17. Type in the url of the web server <http://xxx.xxx.xxx.xxx:8080> where the IP address is the server IP address you recorded earlier.

End of version 6.0.3-specific settings, continue on to configure all 3 versions:



18. Click Databases and create a database.



19. Enter a database name and an administrator password. Leave the check for Demonstration data if you want the database populated with sample data. (Do not change the Super admin password.)

Congratulations!!! You are ready!!!

Once the database is created, click Login. The configuration wizard will start. Refer to www.openerp.com for more information.

Note:

Install a module and evaluate. Then install the next module and evaluate.

Simprocity is happy to provide you with a demonstration of the system. Call (847) 980-5253 or email us at info@simprocityinc.com to get an appointment for your demo today.